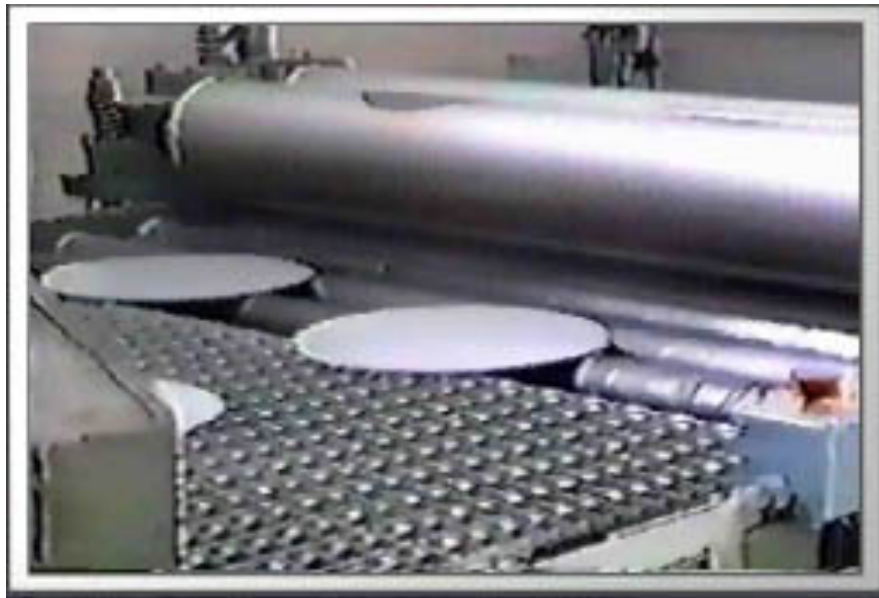




non-stick coatings

NON-STICK COATING WATER BASE & SOLVENT BASE *ROLLER COATING TECHNIQUE*





non-stick coatings

ROLLER COATING TECHNOLOGY

Advantages

- System widely used around the world
- The paint is applied directly on the disc
- High Productivity ± 4.000 disc/hour
- Low loss $<5\%$
- The discs are coated before drawing.

Disadvantage

- Textured appearance
- Durability of the coating



non-stick coatings

ROLLER COATING INTERIORS

Water Based Non-Stick - Roller Coat

These are PTFE based coatings applied on the interior of cookware and bakeware for aluminum substrates. This coating has good adhesion, flexibility, thermal and chemical resistance. This product is applied in three separate coats (base coat + mid-coat + top-coat)

Characteristics:

- (1) excellent film building capability;
- (2) excellent flexibility and adhesion;
- (3) very good abrasion resistance
- (4) very good release



non-stick coatings

ROLLER COATINGS - INTERIOR

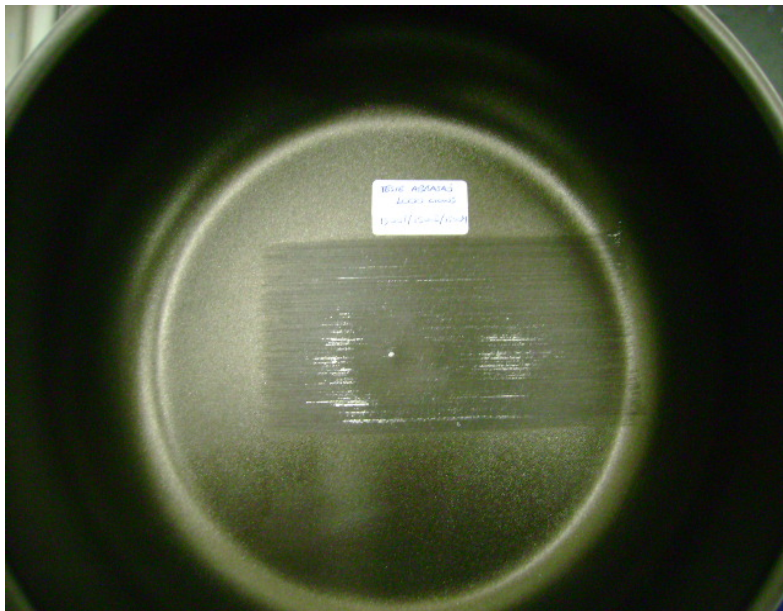
WATERBASED NON-STICK 3 COATING SYSTEMS Roller - Coat Application

APPLICATION	INTERIOR AND EXTERIOR OF COOKWARE, ELECTRICAL APPLIANCES
SUBSTRATE	ALUMINUM
PRETREATMENTS	GRINDING,
DRY FILM THICKNESS (DFT)	20-25 MICRONS
CURING/BAKING TEMPERATURE	420-430 °C (788-806 °F)
COLOR AVAILABILITY	DARKER COLORS
MAXIMUM OPERATING TEMP.	260 °C (500 °F)
RELEASE PROPERTY	VERY GOOD
ABRASION PROPERTY	GOOD



non-stick coatings

Abrasion Test Results



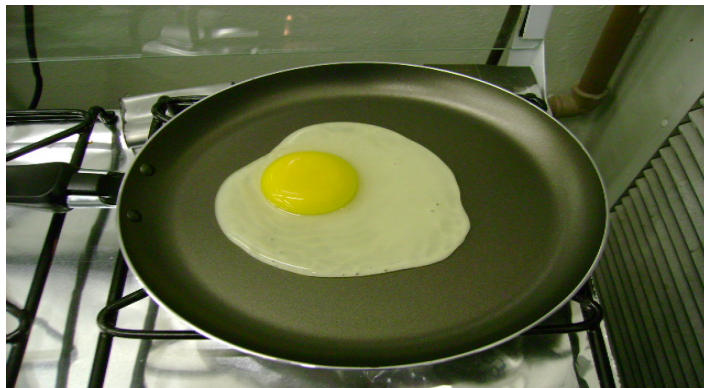
system	roller coat system
Substrate	Raw Aluminum
Pretreatment	Sand Blasted
Baking	420°C (788°F) 3 min
PAD	7447# MAROON
WEIGHT	3,3 lbs
Change of Pad	Every 500 cycle
Check for Substrate	Every 500 cycle
Results	> 1000 cycles



non-stick coatings

QUALITY CONTROL

Egg Release/Abrasion Results



system	W/B 3 coat system
Substrate	Raw Aluminum
Pretreatment	Sand Blasted
Baking	420°C (788°F) 3 min
Operating Temperature	180-190°C (356-374°F)
No. of Dry Egg releases	Passes to 250,000 +
Results	Excellent long term release



non-stick coatings

ROLLER COATING EXTERIORS

Decorative Silicon Polyester - Roller Coat

These are silicone polyester based coatings developed by GMM for aluminum substrates (cookware and bakeware). These coatings have good thermal and chemical resistance and excellent flexibility. These products can be applied in one coat or two coat (base coat + clear)

Characteristics:

- (1)excellent gloss and film building capability;
- (2)excellent flexibility and adhesion;
- (3) very good chemical resistance; MEK resistance
- (4)good abrasion resistance
- (5)extremely wide color selection;



non-stick coatings

ROLLER COATINGS - EXTERIOR

SOLVENT BASED ONE AND TWO COATING SYSTEMS

Roller - Coat

APPLICATION	EXTERIOR OF COOKWARE
SUBSTRATE	ALUMINUM
PRETREATMENTS	GRINDING,
DRY FILM THICKNESS (DFT)	16 - 20 MICRONS
CURING/BAKING TEMPERATURE	270-280° C (518-536° F)
COLOR AVAILABILITY	MANY COLORS
MAXIMUM OPERATING TEMP.	200° C (536° F)
RELEASE PROPERTY	NA
ABRASION PROPERTY	GOOD